

Fusion

GHSS 60"H Heated Self-Service Case

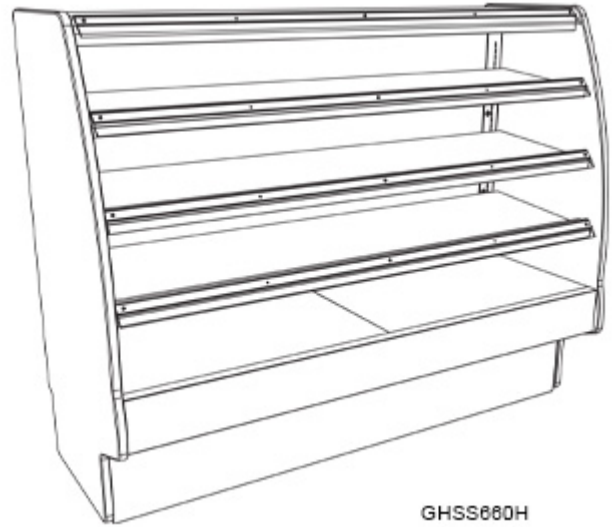
Structural Concepts®

(Lengths do not include 1-1/8" end panels)

- **GHSS460H** 48-3/4"L x 31-3/4"D x 59-5/8"H
- **GHSS460H-4** 48-3/4"L x 31-3/4"D x 59-5/8"H
- **GHSS660H** 73-1/8"L x 31-3/4"D x 59-5/8"H
- **GHSS660H-4** 73-1/8"L x 31-3/4"D x 59-5/8"H

Included

- Heated deck and shelving
- LED top & shelf lights
- One year parts & labor warranty
- Stainless steel rear exterior



GHSS660H

Specify	Standard Features	Additional Options
EXTERIOR COLOR	• Powder coated (stock colors, specify RAL#)	• Laminated (non-premium) Confirm pattern/grain direction • One year parts & labor warranty
INTERIOR COLOR	• Stainless steel	
LOWER FRONT PANEL COLOR	• Black powder coated	• Stainless steel
TRIM COLOR	• Black	• Silver
BASE	• Rail system for shims	
BUMPER FRONT	• 1" Boston bumper (specify color)	• 1" Stainless steel plate rail bumper
END PANELS	• Full w/stainless steel interior (LH / RH)	• Cutaway w/ glass (LH / RH) • End bumper (LH / RH)
UPPER REAR	• Solid back panel	• Reflective glass rear sliding doors
PRICE TAG MOLDING	• None	• Acrylic product stops w/sign channel
SHELVING	• Solid heated shelves, 3 levels	• Solid heated shelves, 4 levels
LIGHTS	• LED 3500K w/ frosted lens	• LED 4000K w/ frosted lens
ELECTRICAL CONNECT	• Electrical leads (remote)	• Three phase locking power cord

Option Notes: 1 - See -4 tech spec for load reqmts

Fusion

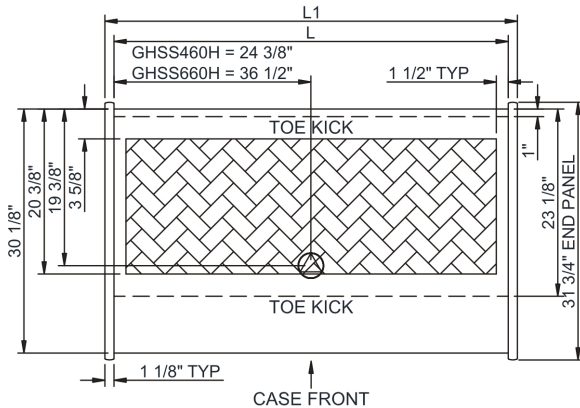
GHSS 60"H Heated Self-Service Case

Structural Concepts®

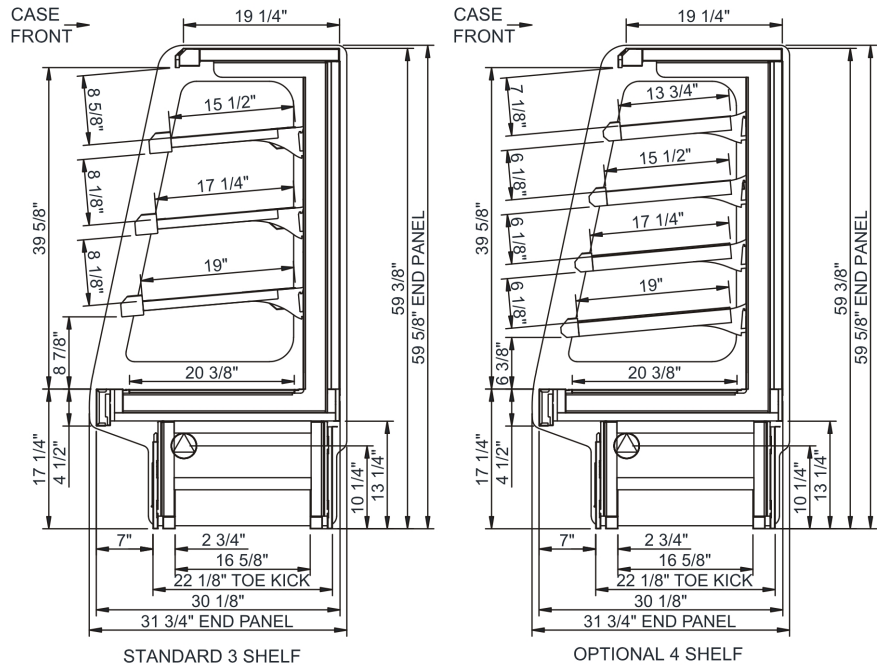
Intended Environment: Type I - Designed to operate in ambient conditions of 75°F with 55% relative humidity unless noted otherwise in system information below.

Zone	Intended Product To Be Displayed	Warmest Avg Prod Temp ° F
1	Packaged heated product	160

PLAN VIEW



SIDE VIEW



NOTE: ALL DIMENSIONS APPROXIMATE

⊕ ELECTRICAL JUNCTION BOX (SUPPLIED WITH 6" LEADS OR POWER CORD).
 ⦿ LOCATION OF DRAIN TUBE FOR REMOTE REF. ONLY (SUPPLIED WITH 3/4" OR 1 1/2" PVC TUBE).

⊕ REFRIGERATION LINE CONNECTION.
 ⦿ REMOTE FLOOR SINK & UTILITIES ACCESS AREA.

⊕ SELF-CONTAINED CASE SERVICE ACCESS AREA.
 ⦿ DRY CASE SERVICE ACCESS AREA.

Model Technical Specifications																
Model	L"	L1"	L2"	System Circuit Volts			Phs	Freq	Amps ***	Watts	Wires	NEMA Plug	SST	Conv. Rack RTU/H	Para. Rack RTU/H	Est Wt
GHSS460H	48.75	51.00	.00	Heat (N/A)	Circuit #1	208	1	50-60	22.29	4,655	2+G	Leads Single	N/A	N/A	N/A	800
						240	1	50-60	25.65	6,166	2+G	Leads Single	N/A	N/A	N/A	
						208	3	50-60	17.13	4,655	3+G	Leads Single	N/A	N/A	N/A	
						240	3	50-60	19.70	6,166	3+G	Leads Single	N/A	N/A	N/A	
GHSS460H-4	48.75	51.00	.00	Heat (N/A)	Circuit #1	208	1	50-60	27.45	5,752	2+G	Leads Single	N/A	N/A	N/A	N/A
						240	1	50-60	31.60	7,618	2+G	Leads Single	N/A	N/A	N/A	
						208	3	50-60	20.64	5,752	3+G	Leads Single	N/A	N/A	N/A	
						240	3	50-60	23.80	7,618	3+G	Leads Single	N/A	N/A	N/A	
GHSS660H	73.13	75.38	.00	Heat (N/A)	Circuit #1	208	1	50-60	31.68	6,742	2+G	Leads Single	N/A	N/A	N/A	1,100
						240	1	50-60	36.40	8,874	2+G	Leads Single	N/A	N/A	N/A	
						208	3	50-60	23.94	6,742	3+G	Leads Single	N/A	N/A	N/A	
						240	3	50-60	27.48	8,874	3+G	Leads Single	N/A	N/A	N/A	
GHSS660H-4	73.13	75.38	.00	Heat (N/A)	Circuit #1	208	1	50-60	39.42	8,427	2+G	Leads Single	N/A	N/A	N/A	N/A
						240	1	50-60	45.32	11,092	2+G	Leads Single	N/A	N/A	N/A	
						208	3	50-60	30.96	8,427	3+G	Leads Single	N/A	N/A	N/A	
						240	3	50-60	35.68	11,092	3+G	Leads Single	N/A	N/A	N/A	

*** Does not include electric defrost on freezer models.

Regulatory Approvals:

All Models ETL Listed to UL 197
 ETL Listed to CAN/CSA 22.2 No. 109
 UL Sanitation to NSF Std 4



Important Notes:

- 1) ELECTRICAL NOTE: If GFCI is required, a GFCI breaker MUST be used in lieu of a GFCI receptacle
- 2) 34" minimum door entry clearance required (without shipping skid).
- 3) The additional shelf option significantly increases electrical load for model. Refer to the -4 suffix model for these specifications.

⚠ WARNING: This product can expose you to chemicals, including Urethane (Ethyl Carbamate), which are known to the State of California to cause cancer and birth defects or other reproductive harm. For more information go to www.P65Warnings.ca.gov.

Note: Information is subject to change at any time. Visit www.structuralconcepts.com for the most current specs.

21870732 Revised 4-19-2022